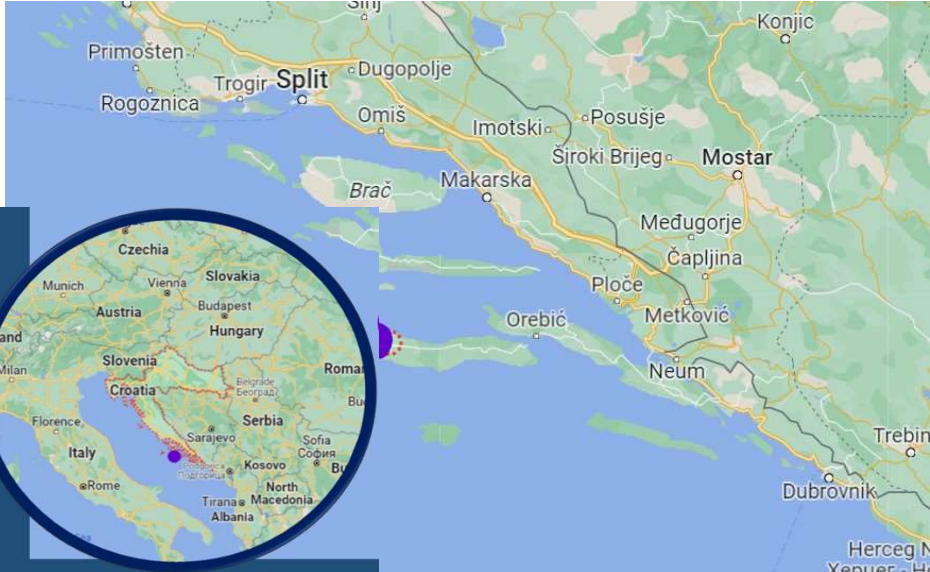


GLOBAL GRUPA LTD

Vela Luka, Korčula Island



No employees at present

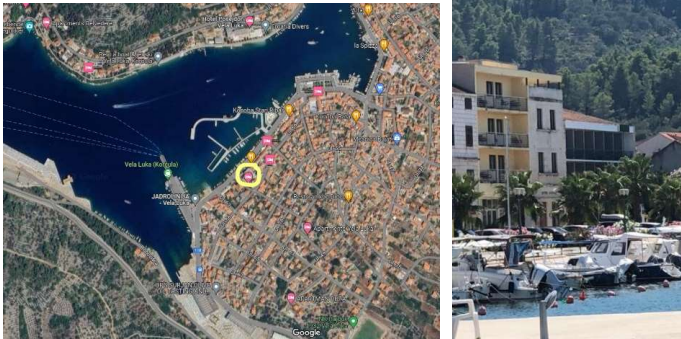
Note: The data, amounts and description of assets presented in this report are based on the available documentation, publicly accessible registers, and information provided by the debtor. All stated amounts are indicative and expressed in euros, and are subject to verification and confirmation through a due diligence process.

SHIPYARD

Land area: app. 36.000 m²
 Border in blue: Area under Concession
 Remaining term of actual concession: 16 years
 Border in pink: Ownership



HOTEL
 Ownership
 1.000 m² land area
 2.772 m² hotel area
 51 rooms currently



Main shed: 90x28x20 m, with the hall in the annex: 48x12x10 m



Two sheds connected, each 60x20 m (pre-assembly)



Warehouse area – open and closed (app. 1.600 m²) space

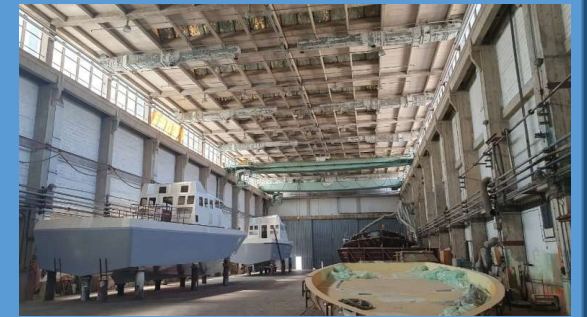


Communication area - pre-assembly to assembly

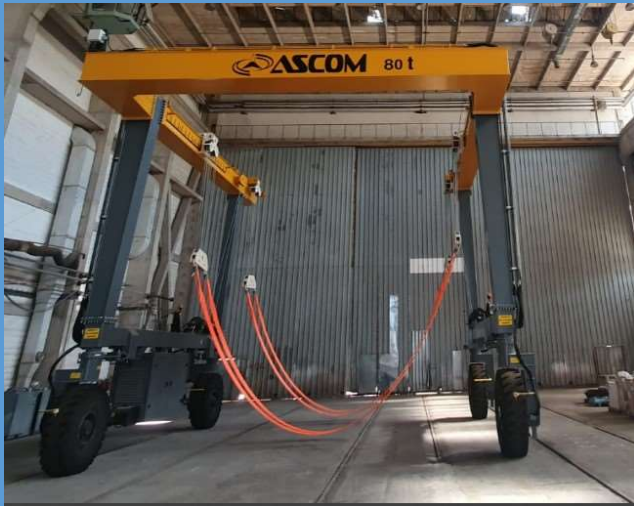
Material Cutting: 27x26 m



Assembly hall: 80x23x14 m



LIFTING EQUIPMENT
(2 travel lifts purchased in 2022)



Travel Lifts Basins and extension of the platform in the front of the Main shed – construction of new Quay Wall



Four new working Plateaus (Repair/Refit/new build Sections) in total area of app. 12.600 m², including travel lifts manipulation space



HOTEL BUILDING



Ground Floor view



contact:

stecajni.upravitelji@gmail.com

mob: +385 92 334 3434