

06/BB2

SPLIT TYPE AIR COND

ER

MODEL

ADF

COOLING CAPACITY

1200

HEATING CAPACITY

1400

REFRIGERANT

R40

DESIGN PRESSURE

H I

Lo

MAX OPERATING PRESSURE FOR EXCHANGER (INDOOR/OUTDOOR)

8MPa

2MPa

WEIGHT

INDOOR

9kg

OUTDOOR

36kg

RATED VOLTAGE

220

RATED FREQUENCY

50Hz

RATED CURRENT

COOLING

HEATING

RATED INPUT

COOLING

HEATING

Max CURRENT

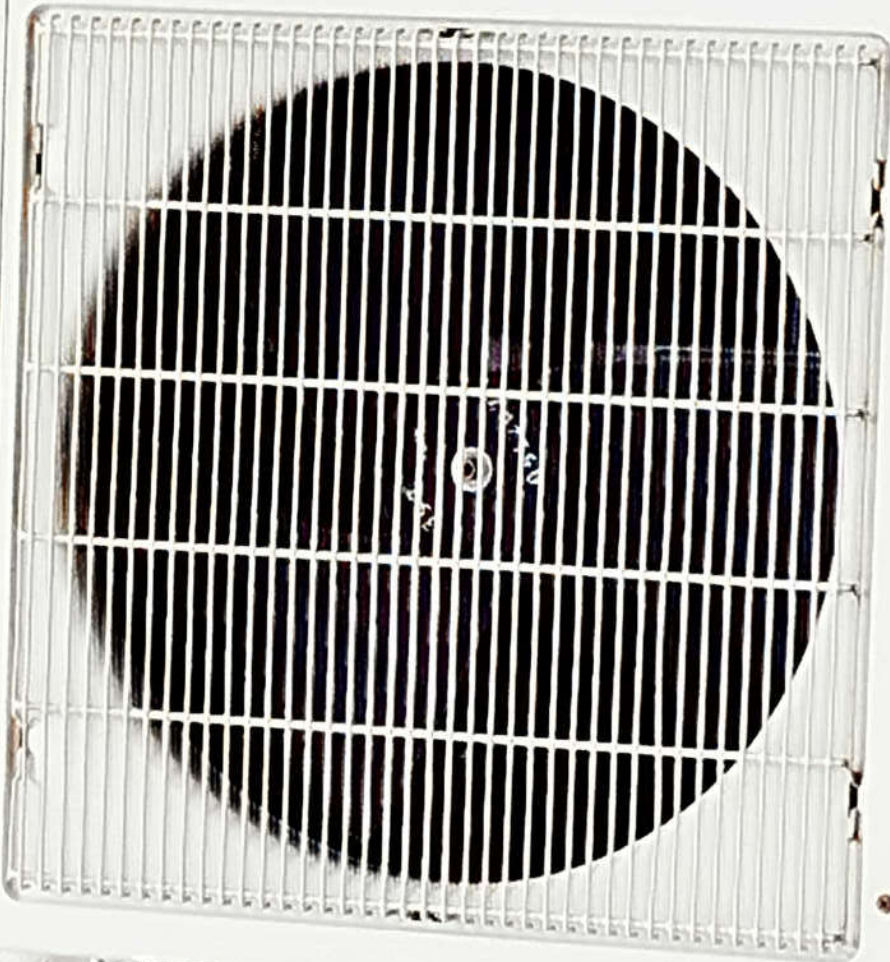
Max INPUT

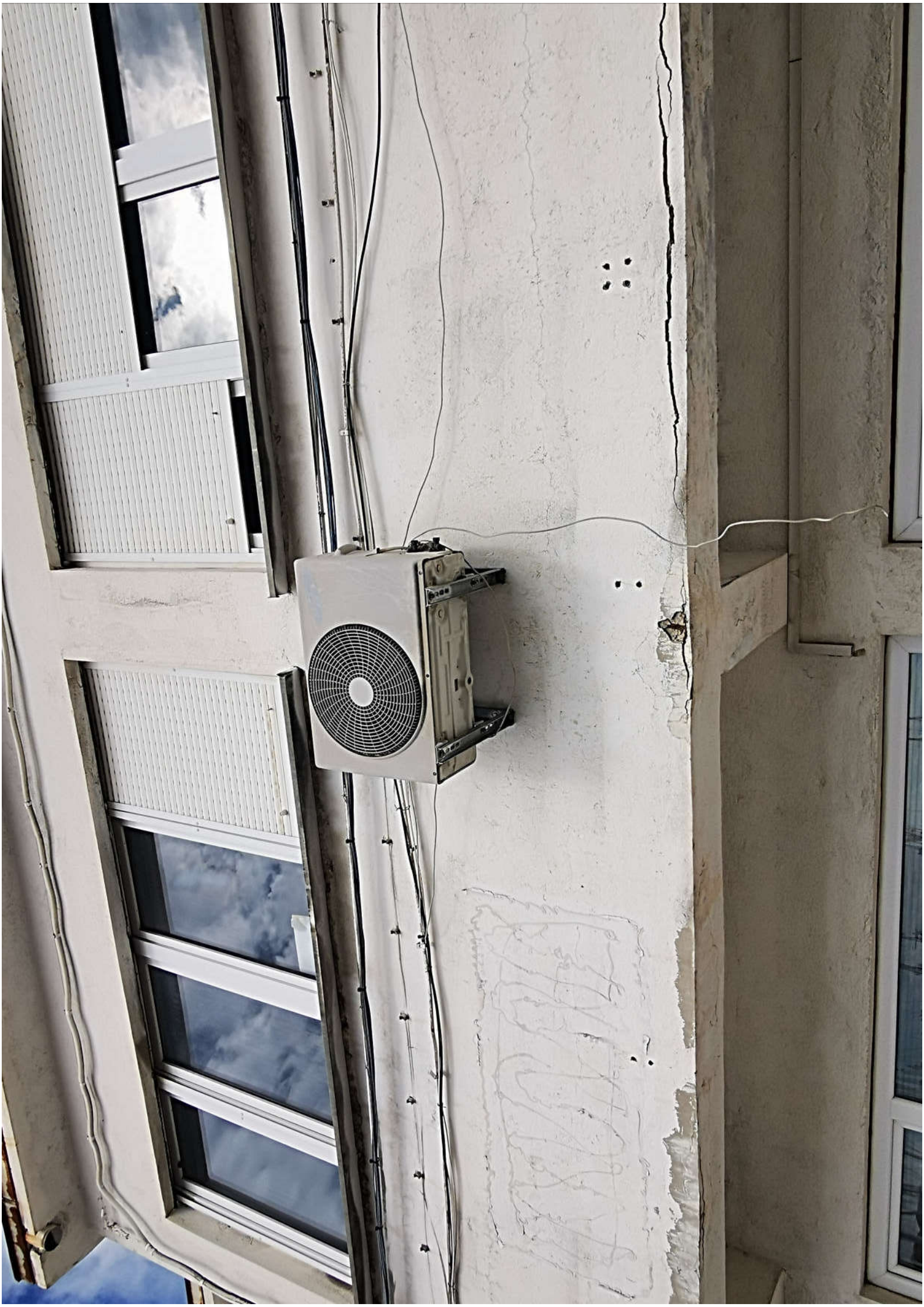
Outdoor Unit

Resistance Class

FORTTE
DIGITAL MASTER

FORTE









SPLIT TYPE AIR CONDIT

MODEL ADF-12HD

COOLING CAPACITY 12008BTU/H

HEATING CAPACITY 14008BTU/H

REFRIGERANT R407C/115C

DESIGN PRESSURE H1 H2

Lo 1

MAX. OPERATING PRESSURE FOR EXCHANGER (INDOOR/OUTDOOR) 2.0MPa/2

WEIGHT INDOOR 9kg OUTDOOR 35kg

RATED VOLTAGE 220-240V-50Hz

RATED FREQUENCY COOLING 5.9A HEATING 6.1A

RATED CURRENT RATED INPUT COOLING 1340W HEATING 1390W

MAX. CURRENT 10.0A

MAX. INPUT 1800W

Outdoor Unit Resistance Class IP24

PORTÉ
ORIGINAL MANAGER

CAUTION

KEEP IMPRO FOR INSTAL

- (1) TAKE AWAY DUST AND MOI
- (2) PURGE THE CONNECTING
- (3) TIGHT CONNECTION (PAT)
- (4) CHECK GAS LEAK (CONNECT)
- (5) RECHARGE REFRIGERANT

ADDITIONAL SUP
AS AN OVER CHARGE OR SHOR
UNITS, ALWAYS REASURE TH
(X) EXCESSIVE SUPPLY FAIL
(X) SHORT SUPPLY FAILURE OF
(O) ACCURACY OF ADDITIONAL

(EXPRESSION)
R=(L-RS) × A (G)
R=(ADDITIONAL SUPPLY OF
L=THE ONE WAY ACTUAL PI
RS=STANDARD PIPE LENGTH
(THE REFRIGERANT FOR S
A=THE AMOUNT OF REFRIGE
(CONFIRM THE AMOUNT OF
INSTRUCTION)



FORTE





OUTER REEF™
TRIDENT



06/002

COIL TYPE AIR CONDITIONER

MODEL	ACF-1210
COIL CAPACITY	120/200W
COIL EFFICIENCY	1100/2000
COIL TYPE	WATER/WATER
COIL PRESSURE	Hi 2 MPa Lo 1 MPa

MAX OPERATING PRESSURE FOR COILS 2.0 MPa 2.0 MPa

COIL TYPE	COIL	0.8	COIL TYPE	0.8
	COIL	35.6	COIL TYPE	35.6
COIL PRESSURE	Hi	2.0 MPa	Lo	1.0 MPa
	Lo	1.0 MPa		
RATED CURRENT	COOLING	0.8 A	HEATING	0.1 A
	HEATING	0.1 A	COOLING	1.34 A
	HEATING	1.34 A	HEATING	1.34 A
Max CURRENT	COOLING	10.0 A		
	HEATING	1.0 A		
Coil Type	Water/Water			
Resistance Class	IP24			

CAUTION

KEEP IMPROPER FOR INSTALLATION

- 1) TAP AWAY DUST AND MOISTURE FROM THE CONNECTION POINTS
- 2) TIGHTEN CONNECTION POINTS
- 3) CHECK GAS LEAK CONNECTION POINTS
- 4) RECHARGE REFRIGERANT AS NECESSARY

ADDITIONAL SUPPLEMENTARY INFORMATION

AN OVER CHARGE OR SHORT CHARGE WILL AFFECT THE EFFICIENCY OF THE UNIT. ALWAYS MEASURE THE REFRIGERANT SUPPLY BEFORE OF AFTER RECHARGING TO AVOID DAMAGE TO THE UNIT.

ADDITIONAL SUPPLEMENTARY INFORMATION

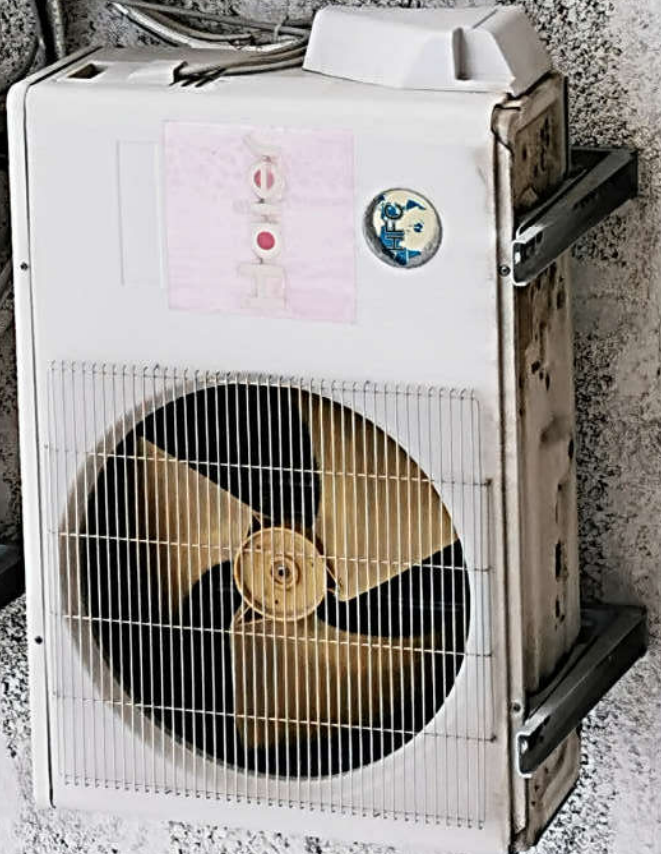
THE REFRIGERANT SUPPLY SHOULD BE MEASURED AT THE POINT OF REFRIGERANT SUPPLY TO THE UNIT. THE AMOUNT OF REFRIGERANT SHOULD BE THE SAME AS THE AMOUNT OF REFRIGERANT SUPPLIED TO THE UNIT.













Serial Number AA8C0 4E020 0AD84 R0301



Haier   

MODEL: AS12GN1EAA

Split type room air conditioner, indoor unit

Power supply 1 PH, 230V ~, 50Hz

Air volume 530m³/h

Anti-electric shock Class I

Net weight 8.8kg

MADE IN P.R.C

Manufactured By Haier Group

Manufacture date 1104

0010535665

Item	Mode	Item	Mode
Cooling capacity	3500W	Heating capacity	3800W
Power Input	1090W	Power Input	1050W
Current	4.9A	Current	4.8A
Working condition indoor	D.B./W.B. 27C/19C	Working condition indoor	D.B./W.B. 20C
(Cooling)	D.B./W.B. 35C/24C	(Heating)	D.B./W.B. 7C/16C
Maximum power input	1350W	Maximum power input	1350W
Maximum current	6.0A	Maximum current	6.0A
Working condition indoor	D.B./W.B. 32C/23C	Working condition indoor	D.B./W.B. 27C
(Cooling)	D.B./W.B. 43C/26C	(Heating)	D.B./W.B. 24C/18C



Haier  (CE) 

WIFI: 4F0-189402/R2 (RF)

Model type name for conditioner, indoor and

Power supply 220V/230V/240V

App. voltage 50/60 Hz

App. electric shock Class I

Net weight 11.5kg

Manufacturer: Haier P.R.C.

Manufacturer: Haier (Germany)

Manufacturer: Haier

Version	Model	Version	Model
Working capacity Working condition value (working) outdoor	4000/1700-1700/500 0.8L/h & 7°C/16°C 0.8L/h & 16°C/24°C 1500/620-2100/900 6.3A	Working capacity Working condition value (working) outdoor	4000/1700-1700/500 0.8L/h & 7°C/16°C 0.8L/h & 16°C/24°C 1500/620-2100/900 7.3A
Power input Current	0.8L/h & 7°C/16°C 0.8L/h & 16°C/24°C 1500/620-2100/900 10.2A	Power input Current	0.8L/h & 7°C/16°C 0.8L/h & 16°C/24°C 1500/620-2100/900 10.2A
Working condition value (cooling) outdoor Rated power input Rated current	0.8L/h & 7°C/16°C 0.8L/h & 16°C/24°C 1500/620-2100/900 10.2A	Working condition value (cooling) outdoor Rated power input Rated current	0.8L/h & 7°C/16°C 0.8L/h & 16°C/24°C 1500/620-2100/900 10.2A





Haier

Technical specification label with various icons and text, including a warning symbol and a barcode.



Haier

ten te koop



Haier







SPLIT TYPE AIR CONDITIONER	
MODEL	ADR-12HD
COOLING CAPACITY	12000Btu/h
HEATING CAPACITY	14000Btu/h
REFRIGERANT	R407C/180g
DESIGN PRESSURE	H1
Lo	2.2MPa
Hi	1.2MPa
EXCHANGER (INDOOR/OUTDOOR)	2.2MPa/2.2MPa
WEIGHT	INDOOR 9kg
	OUTDOOR 36kg
RATED VOLTAGE	220-240V
RATED FREQUENCY	50Hz
RATED CURRENT	COOLING 5.9A
	HEATING 8.1A
RATED INPUT	COOLING 1340W
	HEATING 1390W
Max. INPUT	10.0A
Outdoor Unit	1800W
Resistance Class	IP24







054036

CE	
06/032	
SPLIT TYPE AIR CONDITIONER	
MODEL	ADR-12HD
COOLING CAPACITY	12000BTU/h
HEATING CAPACITY	14000BTU/h
REFRIGERANT	R407C/136g
DESIGN PRESSURE	H1
MAX OPERATING PRESSURE FOR EXCHANGER (INDOOR/OUTDOOR)	2 MPa / 2 MPa
WEIGHT	INDOOR 9kg
RATED VOLTAGE	220-240V~
RATED FREQUENCY	50Hz
RATED CURRENT	COOLING 8.9A
RATED INPUT	HEATING 6.1A
MAX CURRENT	HEATING 13.40A
Max. INPUT	HEATING 1380W
Outdoor Unit	1800W
Resistance Class	IP24

FORTE
SPLIT TYPE AIR CONDITIONER